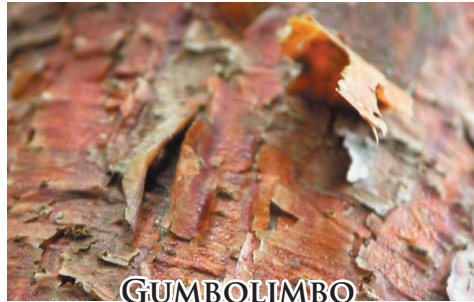


# A HERBAL TONIC

CHORUS FROM "GUMBOLIMBO: A SONIC GEOGRAPHY OF BELIZE"  
PHILIP BLACKBURN

PREMIERE: MARCH 16, 2007, WILD MUSIC A-GO-GO, SCIENCE MUSEUM OF MINNESOTA



## ENSEMBLE

Soprano solo (Maria Jette)

5-50 speaking/singing chorus

10 chorus members double on 10 bamboo reed pipes

1 doubles on turtle shell rattle

6+ double on magnetic Zingers

1 doubles on Maya trumpet tree

## NOTES

Performance instructions relate to the accompanying lists of 95 vascular plants found in the Belize rainforest in five languages: Common, Spanish, Creole, Maya, and Latin. Pronounce them using your best abilities.

*Names speak volumes. They describe the namer as much as the named. You can infer a thousand stories in their everyday poetry.*

*The Belize jungle is a pharmacy, a supermarket, and a home improvement center, depending on what you are looking for. There are no weeds in this ecology, everything supports the growth of everything else. If one plant is harmful, its neighbor will offer a cure. The bark of the Gumbolimbo tree is one of the most powerful bush remedies.*

*A Herbal Tonic brings together five naming systems or languages for the same list of plants. Are they really the same? What do they tell us about why different people go to the bush and what they find there? While we are jabbering away in different tongues, what is happening to the forest? What is the sound of an ethnobotanical Requiem?*

# 1

*Stand in a circle around the audience.*

*Throw Zingers in the air and catch them to sound like cicadas; sparsely at first, then more dense. DO NOT DROP!*

*After 45", (watch cue) in a loud stage whisper, Chorus members articulate the following Mayan names.*

*Divide Chorus into three; each group begins with Column 1, 2 or 3. Stay roughly together. Gaps in the list are treated as rests for that approximate duration.*

*On reaching the bottom of your first column, begin to process in a circle around the audience. Stop when you have reached your original spot.*

*Zinger players stop when the procession begins, and start any two columns of Mayan whispering.*

*All stop after going through once, and begin humming.*

**1** Bosh pol pimienta, Naba-cuc  
-  
-  
-  
Anál  
Ku-xub, Shi-yau  
On  
-  
Chin-chin-pol-ojo  
Box haas  
Ca-cal-tun  
Pixoy  
-  
Chin-in, Zink-in  
-  
Lek, Luch  
Mis xiv  
Xcoch  
Ku-che  
Pasma  
Mes-bel  
Pu ja  
Subin, Zubin  
-  
-  
Hop-ya  
-  
Pom  
Ix im  
Ki bix  
-  
-

**2** Cruxi  
-  
Anál  
-  
Sak-u-sol, Yax-nik  
Amate  
-  
Mis  
Chac-pom  
Ya-ax-como-che  
Pici, Pichi, Puta  
Chaca  
Hatz  
Kakchiat'tsum  
Rum-p'ok  
-  
Kayabim, An-mank  
Shkot-k'wai  
-  
-  
Ek-ch-can, Ok-pich  
Ya-ax-ak  
Ix-ta-pul  
-  
Schma-mo-cal  
-  
Pa-sak  
-  
Put  
-  
Xiv-yak-tun-ich, Tye-pu  
-  
-

**3** Cuyche  
Xucul  
Pasma, Kehal-pim, Dungya  
Sac-te-much, Klaush-pim  
-  
-  
Sink-in  
Chal-che  
Ix-chal-che  
U-tu-it  
Pa-kam  
-  
Pay-che  
-  
-  
Zutz pakal  
Bukut  
-  
Pa-al, Toom-pa'ap  
-  
Pasma wa-xi-uil  
Cho-otz, Po-hor  
Xmutz  
Cot-a-cam, Xryay-ach-bak-shul  
Eremuil  
-  
Ix-tot  
-  
-  
-  
Xix-el-ba  
Buul-che, Ya-me-bu

---

*Starting at the bottom of your first column, walk in a circle around the audience, stop at your original spot.*

# 2

*Chorus: Hum any pitch, mf, low in your range, change pitch with each breath, do not seek to harmonize.*

*Two soloists from the Chorus, standing opposite each other across the circle:*

*Soloist A: Speak the Common names in order, loud and clear, do not wait for Creole responses.*

*Soloist B: Shout the corresponding Creole names in the gaps between the corresponding Common names.*

<u>Common</u>	<u>Creole</u>		
Allspice	-	Fiddlewood, Walking Lady	<i>Blue blossom</i>
Almond .....	<i>Hammon</i>	Fig Tree	-
Aloe vera.....	<i>Sink-am-bible</i>	Ginger	-
Amaranth, Pig weed.....	<i>Calaloo</i>	Give and Take	-
Anál	-	Grande Betty	-
Annatto	-	Green stick	-
Avocado pear	<i>Pear</i>	Guava	-
Ax master	<i>Exmasta bark</i>	Gumbolimbo.....	<i>Birch Bark</i>
Baby's Tears	-	Jack in the bush	-
Banana	-	Hibiscus	-
Basil .....	<i>Balsley, Barsley</i>	Hog Plum	-
Bay Cedar	-	Dogwood.....	<i>Maybush, Wormwood</i>
Bear Paw Fern	-	Jackass Bitters	-
Bird of Paradise Flower.....	<i>Flambeau</i>	John Charles	-
Buttonwood .....	<i>Spanish elder</i>	Lemon Grass.....	<i>Fever Grass</i>
Calabash Tree	-	Life Everlasting.....	<i>Tree of Life</i>
Cancer herb.....	<i>Cattail</i>	Maiden Head Fern.....	<i>Black stick</i>
Castor bean plant.....	<i>Oil nut</i>	Man vine	-
Cedar	-	Marigold	-
Chachalpec	-	God almighty bush.....	<i>Scorn the earth</i>
Chichibe	-	Mexican heather	-
China root.....	<i>Wild sarsa</i>	Sticky sticky burr burr	-
Cockspur	-	Dysentery bark	-
Coconut	-	Oregano castillo.....	<i>Oregano</i>
Coffee	-	Papaya	-
Contra Hierba	-	Periwinkle.....	<i>Ram goat, All day flower</i>
Contribo.....	<i>Duck flower</i>	Pheasant tail	-
Copal	-	Physic nut	-
Corn, maize	-	Christmas candle.....	<i>Piss a bed</i>
Cowfoot vine	-	Provision bark	-
Creole Gal, Carib Gal.....	<i>Wild coco</i>	Purslane	-
Crepe Myrtle	-	Rabbit's paw.....	<i>Wild Sunflower</i>
Cross Vine.....	<i>Skipping Rope Vine</i>	Red Head.....	<i>Polly red head</i>
Coriander.....	<i>Colantro</i>	Red Mangrove	-
Dog's tongue	-	Red rose	-
Wormseed.....	<i>Mexican weed</i>	Rue	-
		Santa Maria	-

Santa Maria	-	
Santa Maria.....	<i>Cowfoot*</i>	<i>*Pipe 1</i>
Scoggineal	-	<i>(B) enters</i>
Scorpion's tail	-	<i>quietly and</i>
Skunk Root.....	<i>Rat Root</i>	<i>plays until</i>
Snake Plant	-	<i>the Sopra-</i>
Sorosi	-	<i>no enters</i>
Sour Orange Tree	-	
Stinking Toe	-	
Strong Back	-	
Susumba	-	
Tamarind	-	
Tan Chi	-	
Trumpet Tree	-	
Twelve O'Clock.....	<i>Prickle</i>	
Vervain.....	<i>Vervine</i>	
Wild Coffee	-	
Wild Custard apple	<i>Bullock's Heart</i>	
Wild Pineapple	-	
Wild Poinsettia	-	
Wild Sage	-	
Wild Yam.....	<i>White China Root</i>	
Wire Wis	-	
Yama Bush.....	<i>Rat Bean</i>	

### 3

**Chorus:** together on cue, in choral unison, singing on the given B pitch, chant the Spanish text slowly, unhurried, without a clear pulse. Observe breaks (-) as rests/breaths.

**Solo Soprano:** see next sheet for Latin chants. Begin at *Guineo\**. Text underlay ad lib, chant-like, without measure.

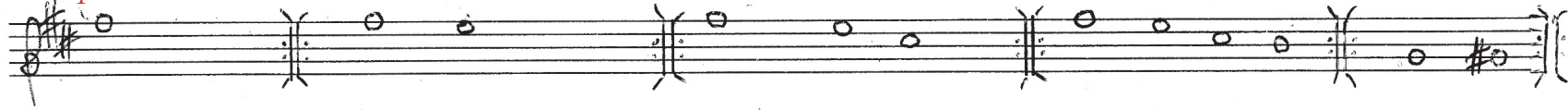
Pimenta gorda
Almendra
-
Quelite
-
Achiote
Aguacate
Quebracho
-
Guineo [ <i>* Soprano enters</i> ]
Albahaca
Tapaculo
Canawana, Tallawalla
Flor de la Virgen, Irritacion
Cordonsillo
-
Hierba del cancer
Higuera. Ricino
Cedro
Phosforo
Escoba, Malva
-
Cuerna de vaca
Coco
Café
Consuelda, Hinchazon
Contribo, Flor de pato
Copal
Maiz
Pata de vaca
-
-
Hierba del pensamiento
Culantro
Lengua de perro
Epazote
-

Higuero
Jengibre
Escoba
Palo carbon
Palo verde
Guayaba
Broton, Indio desnudo
-
Tulipan
Jobo
Jabin, Palo de gusano
Mano de lagarto, tres puntas
Hierba Martin
Zacate limon
Siempre viva
Helecho, Palo negro
Bejuco de hombre
Flor de Muerto
Matapalo
Corriente, Mananito
Mosote, Pega ropa
Negrito, Acetuna
Oregano
Papaya
Chata, picaria
Cola de Faisan
Pinon
Hoja de barajas
Bobo, Santo Domingo, Sapoton
Verdolaga
Mano de conejo
Sanalo-todo
Mangle colorado
Rosa
Ruda
Pito sico
Pito sico

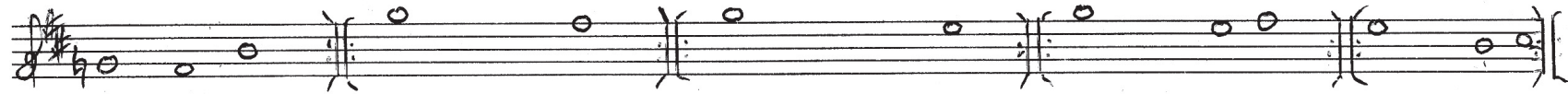
San Dideo
Nopal, tuna
Cola de Alacran, Rabomico
Zorillo
Culebrilla, Lengua de vaca
Condiamor
Naranja agria
Carqué
-
Susumba
Tamarindo
Claudiosa
Warumo
Dormilon
Verbena
Suprecayo
Anona del Monte
Pinuela
Flor de Pascua del Monte
-
Barba del Viejo
Bejuco de alhambre
Frijolillo

*Pipes enter one by one, playing your Pipe in similar word rhythms with many rests. improvise and explore the timbral possibilities of your instrument. Continue playing for 20" or so after the Soprano finishes; Stop when you hear the Turtle Shell.*

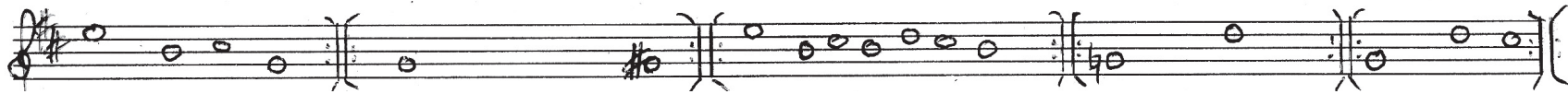
Solo Soprano



Pimenta dioica	Bixa orellana	Ocimum basilicum	Crescentia cujete	Sida rhombifolia
Terminalia catappa	Persea americana	Guazuma ulmifolia	Acalypha arvensis	Smilax
Aloe vera	Krugiodendron ferreum	Phlebdium decumanum	Ricinus communis	Acacia cornigera
Amaranthus dubius	Phyllanthus liebmannianus	Caesalpina pulcherrima	Cedrela odorata	Cocos nucifera
Psychotria acuminata	Musa acuminata	Piper amalago	Salvia coccinea	Coffea arabica



Syngonium podophyllum	Alocasia macrorrhiza	Chenopodium ambrosoides	Cupania belizensis	Hibiscus rosa-sinensis
Aristolochia trilobata	Lagerstroemia	Vitex gaumeri	Critonia morifolia	Spondius radlkoferi
Protium copal	Paullinia tomentosa	Ficus maxima	Psidium Guajava	Piscidia piscipula
Zea mays	Eryngium foetidum	Zingiber officinale	Bursera Simaruba	Neurolaena lobata
Bauhinia herrerae	Psychotria tenhifolia	Cryosophila stauracantha	Chromolaena odorata	Hyptis verticillata



Cymbopogon citratus	Phoradendron piperoides	Carica papaya	Pachira aquatica	Rosa chinensis
Kalanchoe pinnata	Cuphea calophylla	Catharanthus roseus	Portulaca oleracea	Ruta graveolens
Adiantum tenerum	Priva lappulacea	Anthurium schlechtendalii	Sphagneticola trilobata	Croton
Securidaca diversifolia	Simarouba glauca	Jatropha curcas	Hamelia patens	Pluchea odorata
Tagetes erecta	Lippia graveolens	Senna alata	Rhizophora mangle	Pothomorphe peltata



Opuntia cochenillifera	Citrus aurantium	Capraria biflora	Annona reticulata	Lygodium venestum
Heliotropium indicum	Cassia Grandis	Cecropia peltata	Bromelia pinguin	Senna occidentalis
Chiococca alba	Desmodium adscendens	Mimosa pudica	Euphorbia pulcherrima	
Sansevieria trifasciata	Solanum rudepannum	Stachytarpheta cayennensis	Lantana camara	
Momordica charantia	Tamarindus indica	Malmea depressa	Dioscoria	

# 4

Turtle Shell: On cue, play steady rhythm throughout, 90 bpm, improv once the pulse is established

Chorus: Pick a favorite name, speak it rhythmically. Repeat/loop the word 10 - 20 times, quietly at first, with the last few repetitions getting as loud as possible. Then pick another and do the same. etc.

- |                   |                          |                       |                  |
|-------------------|--------------------------|-----------------------|------------------|
| Hibiscus          | Banana                   | Vervain               | Red Head         |
| Hog Plum          | Basil                    | Wild Coffee           | Red Mangrove     |
| Dogwood           | Bay Cedar                | Wild Custard apple    | Red rose         |
| Jackass Bitters   | Bear Paw Fern            | Wild Pineapple        | Rue              |
| John Charles      | Bird of Paradise Flower  | Wild Poinsettia       | Santa Maria      |
| Lemon Grass       | Buttonwood               | Wild Sage             | Santa Maria      |
| Life Everlasting  | Calabash Tree            | Allspice              | Santa Maria      |
| Maiden Head Fern  | Cancer herb              | Almond                | Scoggineal       |
| Man vine          | Marigold                 | Aloe vera             | Scorpion's tail  |
|                   | God almighty bush        | Amaranth, Pig weed    | Skunk Root       |
|                   | Mexican heather          | Anál                  | Snake Plant      |
|                   | Sticky sticky burr burr  | Annatto               | Sorosi           |
|                   | Dysentery bark           | Avocado pear          | Sour Orange Tree |
|                   | Oregano castillo         | Ax master             | Stinking Toe     |
| Castor bean plant | Papaya                   | Baby's Tears          | Wild Yam         |
| Cedar             | Dog's tongue             | Contra Hierba         | Wire Wis         |
| Chachalpec        | Wormseed                 | Contribo              | Yama Bush        |
| Chichibe          | Fiddlewood, Walking Lady | Copal                 |                  |
| China root        | Fig Tree                 | Corn, maize           |                  |
| Cockspur          | Ginger                   | Cowfoot vine          |                  |
| Coconut           | Give and Take            | Creole Gal, Carib gal |                  |
| Coffee            | Grande Betty             | Crepe Myrtle          |                  |
|                   | Green stick              | Cross vine            |                  |
|                   | Guava                    | Coriander             |                  |
|                   | Jack in the bush         | Strong Back           |                  |
|                   |                          | Susumba               |                  |
|                   |                          | Tamarind              |                  |
|                   |                          | Tan Chi               |                  |
|                   |                          | Trumpet Tree          |                  |
|                   |                          | Twelve O'Clock        |                  |

# 5

After approx. 2'00" Maya Trumpet Tree enters with 3 long didjeridu-style drones. Turtle Shell stops.

Chorus: finish your loop and then coalesce onto "Gumbolimbo" together, ff.

Gumbolimbo Gumbolimbo Gumbolimbo

Bamboo Pipe 1(b) plays long tone to give pitch for "Amen".

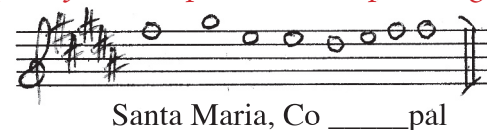
Chorus cuts off at the sound of the pipe (watch for cue)

Chorus: On cue, re-enter, mf, singing "Copal" to the notes of "Amen" (plagal cadence). Do not coordinate the notes or resolve the cadence.

Zingers: play to end, do not process out, get sparser as Chorus fades



Solo Soprano joins in, repeat to the end, processing



Chorus: Process in a circle and walk offstage singing, to silence